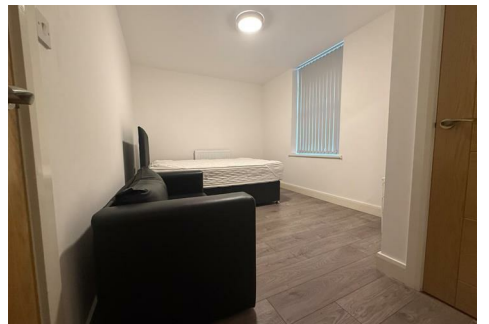




**RE/MAX**  
Elite



**38 - 39 Lichfield Street, Walsall, WS1 1TJ**  
**£775 Per month**

**MODERN 1-BEDROOM FURNISHED FLAT IN WS1 – IDEAL FOR PROFESSIONALS**

This stylish 1-bedroom flat in the heart of Walsall offers modern interiors and unbeatable convenience. Located close to Walsall Arboretum, local shops, restaurants, and with excellent motorway access, it's the perfect choice for working professionals.

## LIVING/KITCHEN AREA

Open-plan and thoughtfully designed, this space features sleek dark cabinetry, integrated oven and hob, washing machine, under-counter fridge, and tiled splashbacks. The living area is furnished with a modern black leather sofa and coffee table, set on wood-effect laminate flooring for a clean and contemporary finish.

## BEDROOM

A generously sized double room with a comfy bed, headboard, and matching black leather sofa for added lounging space. Modern blinds and neutral décor make this a relaxing retreat.

## BATHROOM

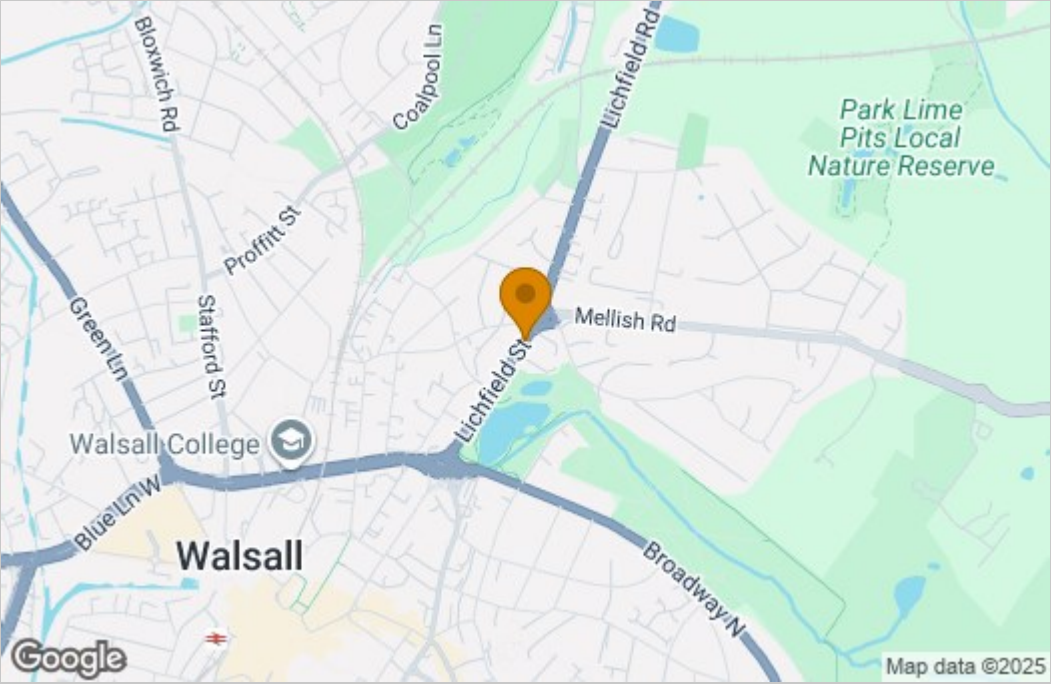
Fully tiled with a polished marble look, the bathroom offers a walk-in glass shower, toilet, pedestal sink, chrome towel ring, and a large wall-mounted mirror. Clean, fresh, and easy to maintain.

## EXTERIOR & PARKING

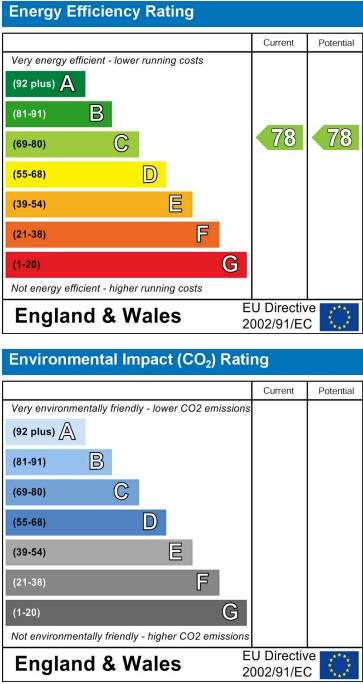
Off-road parking is available at the front of the building. The rear offers a unique, low-maintenance communal courtyard with raised planters, brick boundary walls, and a secluded feel — ideal for outdoor relaxation.

Floor Plan

Area Map



Energy Efficiency Graph



These particulars, whilst believed to be accurate are set out as a general outline only for guidance and do not constitute any part of an offer or contract. Intending purchasers should not rely on them as statements of representation of fact, but must satisfy themselves by inspection or otherwise as to their accuracy. No person in this firms employment has the authority to make or give any representation or warranty in respect of the property.